

GREATER HYDERABAD MUNICIPAL CORPORATION

O/o THE EXECUTIVE ENGINEER (DISASTER MANGEMENT CELL)

Please visit the following links for weather updates of GHMC limits (Weather products will be updated at 10 minutes interval)

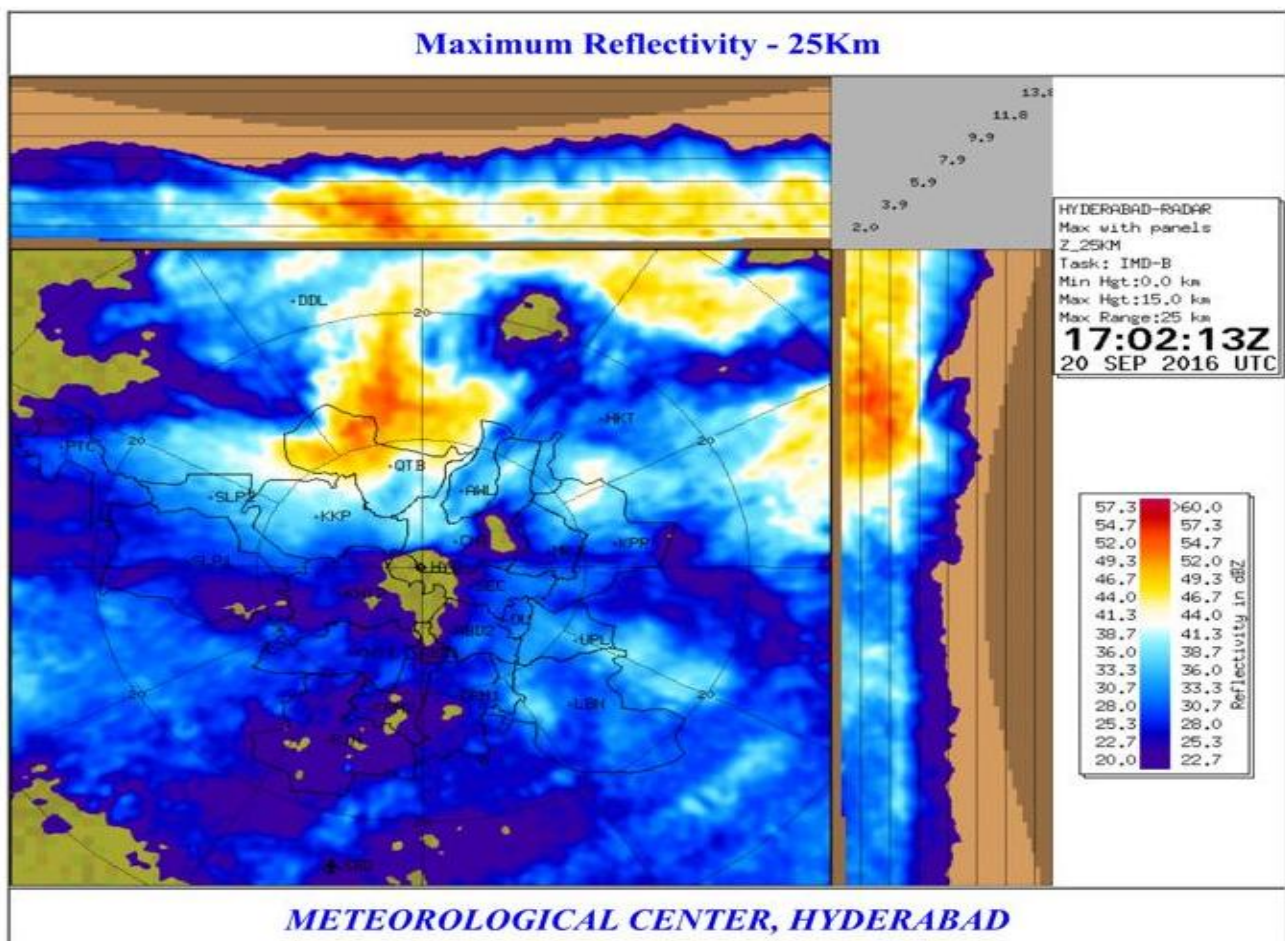
http://www.imdhyderabad.gov.in/tssite/hyd_whtr.html

(or)

<http://59.90.76.153:8088/radar/ghmc.html>

Upon visiting the above links the Hyderabad Doppler Weather Radar Images will be appear as shown below and which may be interpreted/understood as per the Color coding as explained below:

HYDERABAD DOPPLER WEATHER RADAR IMAGES



COLOUR

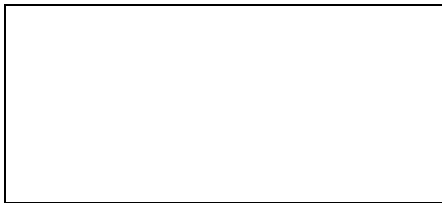
INDICATES



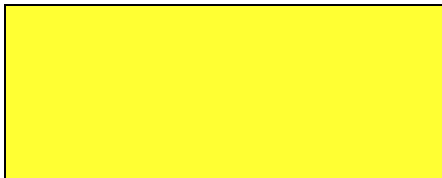
Very Low intensity clouds. Weather appears to be cloudy but may not yield rain.



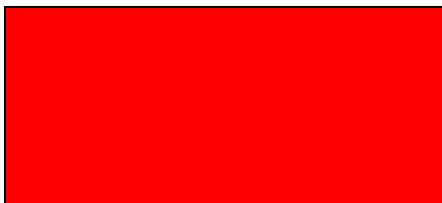
Low intensity clouds which may cause Drizzle / Light rainfall.



Moderate intensity clouds which may cause light to Moderate rainfall



High intensity clouds which may cause Moderate to Heavy rainfall.



Very High intensity clouds which may cause Heavy to Very heavy rainfall.